

FED. ROAD DIST. NO.	STATE	PROJECT NO.	FISCAL YEAR	SHEET NO.	TOTAL SHEETS
6	ARK.			1	9
STATE JOB NO. 6262					

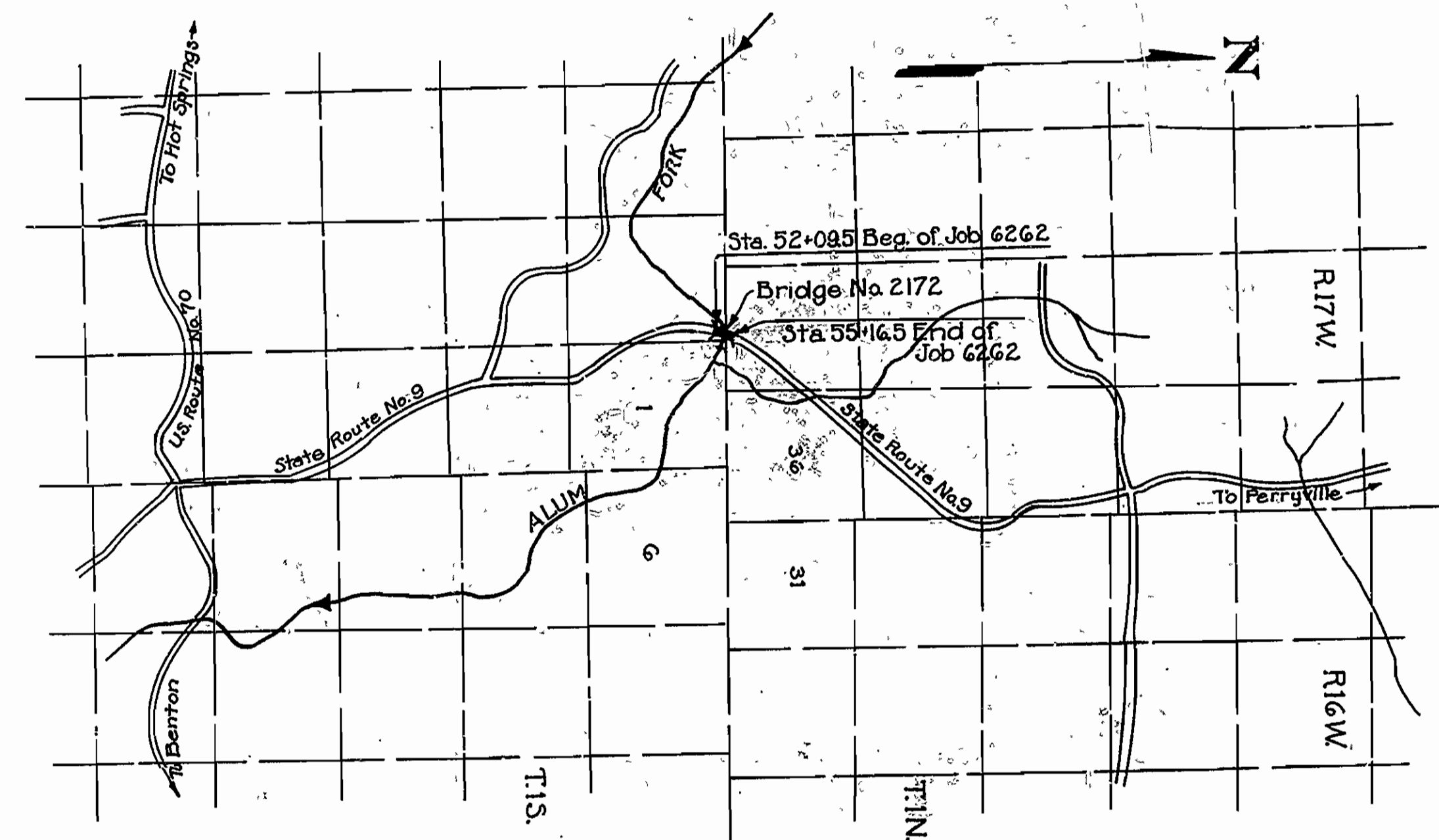
STATE OF ARKANSAS
STATE HIGHWAY COMMISSION

PLAN OF PROPOSED BRIDGE
OVER ALUM FORK OF SALINE RIVER
SALINE COUNTY

ROUTE 9 SEC. 5
JOB NO 6262

INDEX OF SHEETS

Sheet No.	Drawing No.	Title
1	5858	Title Sheet
2	5859	Summary Sheet
3	5860	Layout of Bridge No. 2172
4	5861	Details of Bents 1 and 5
5	5862	Details of Bents 2 to 4 inclusive
6	5863	Details of Truss Span and Adjacent Beam Spans
7	2111	Details of 40' I-Beam Span
8	1891	Basis for Computing Excavation for Structures
9	1888	Backfill for Structures



LAYOUT
Scale: 1"=5000'

LENGTH OF PROJECT= _____
LENGTH OF BRIDGES= 307 Ft. .058 Mile
LENGTH OF EMBANKMENT= _____
LENGTH OF JOB= 307 Ft. .058 Mile

Arkansas State Highway Commission
Standard Specifications for Road and Bridge
Construction adopted June 30, 1936, together
with Special Provisions listed.

PAMPHLETS

DIVISION I
DIVISION II PARTS 1, 8a, 8b, 8c.
DIVISION III
DIVISION IV

SPECIAL PROVISIONS

8-2 Employment of Labor
850-1 Engineers Field Office
853-1 Machine Mixing
Altering and Erecting Truss Span (2-5-40)

APPROVED _____
CHIEF ENGINEER-U. S. BUREAU OF PUBLIC ROADS
APPROVED _____
DISTRICT ENGINEER-U. S. BUREAU OF PUBLIC ROADS
APPROVED _____
CHIEF-U. S. BUREAU OF PUBLIC ROADS
APPROVED _____
CHAIRMAN-STATE HIGHWAY COMMISSION
APPROVED _____
STATE HIGHWAY ENGINEER

N.B. Harris
PRINCIPAL HIGHWAY ENGINEER (BRIDGES)

BRIDGES No. 2172

DRAWING No. 5858

FED. ROAD DIST. NO.	STATE	PROJECT NO.	FISCAL YEAR	SHEET NO.	TOTAL SHEETS
6	ARK.				
STATE JOB NO. 6262				29	

BRIDGE QUANTITIES

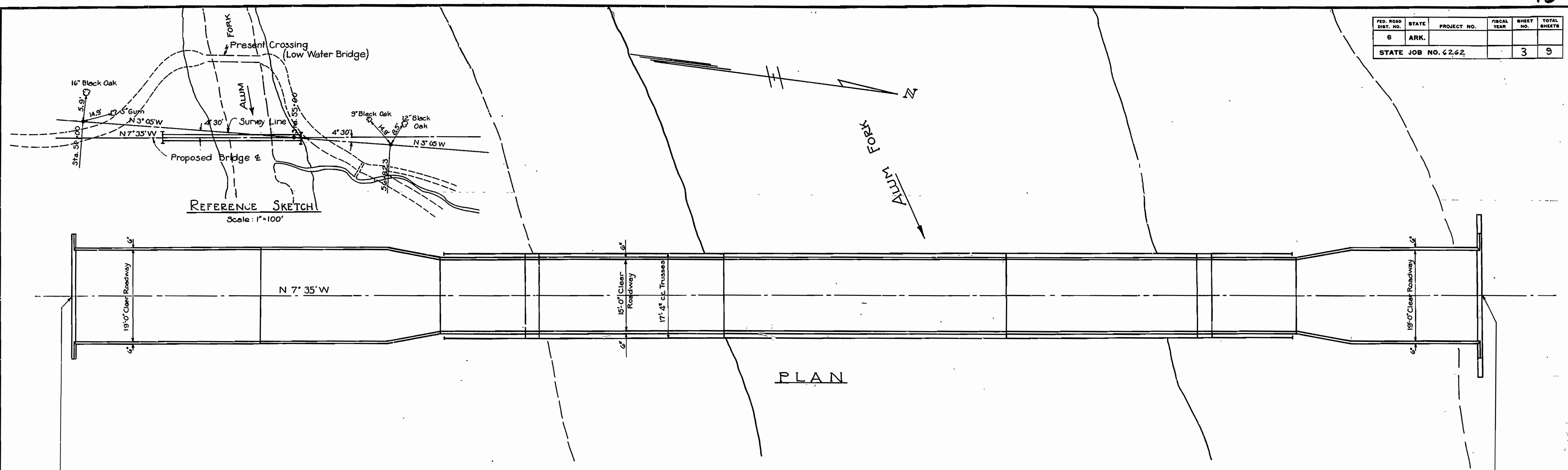
Item No.	Item	Unit	Bent 1	Bent 2	Bent 3	Bent 4	Bent 5	Span 1	Span 2	Span 3	Span 4	Total
103	Dry Excavation for Structures	Cu.Yd.	90	58	78	20	16					262
103	Wet Excavation for Structures	Cu.Yd.	50	34	43							127
103	Solid Rock Excavation for Structures	Cu.Yd.	9	4	5	10	7					35
SP. & 802	Class 'A' Concrete for Bridges	Cu.Yd.	29.63	27.62	35.10	27.75	13.90					134.00
803	Reinforcing Steel	Lb.	4824	2725	3755	3050	1606					15960
807	Structural Steel in Beam Spans	Lb.						10293	10183		10169	30645
SP. & 807	Structural Steel in Truss Spans	Lb.								36000		36000
809	Untreated Bridge Timber	MF.BM.						6.809	6.522	15.796	6.641	35.768
S.F.	Altering and Erecting Truss Span											Complete

SUMMARY SHEET
 BRIDGE OVER ALUM FORK OF SALINE RIVER
 SALINE COUNTY
 ROUTE 9 SEC. 5
ARKANSAS STATE HIGHWAY COMMISSION
 LITTLE ROCK, ARK.
 Drawn By: L.F.C. Date: 2-6-40
 Traced By: W.A.D. Date: 2-7-40
 Checked By: _____ Date: _____
 BRIDGE NO. 2172 DRAWING NO. 5859


 M.B. Lewis
 PRINCIPAL HIGHWAY ENGINEER (BRIDGE)

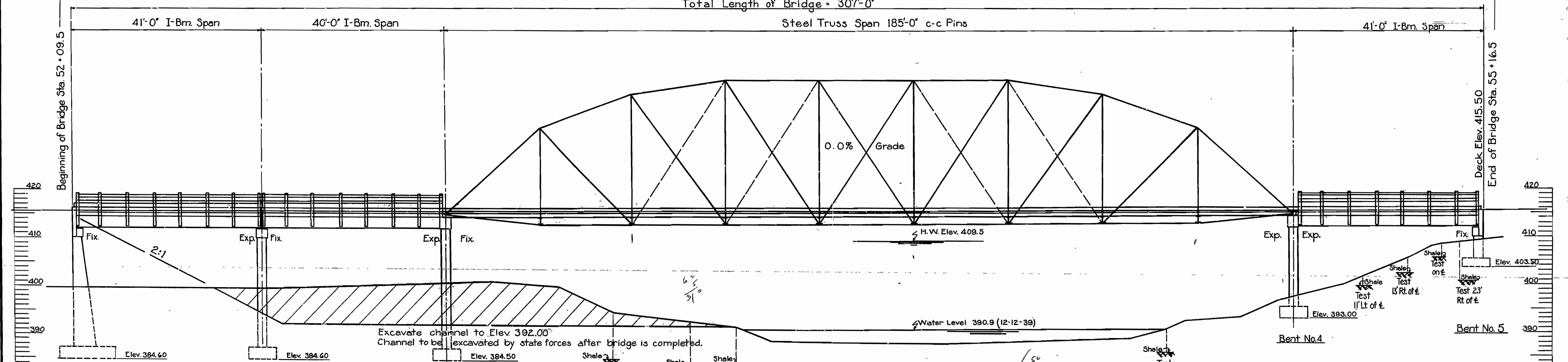
Scale: _____ in. = ft.

FED. ROAD DIST. NO.	STATE	PROJECT NO.	FISCAL YEAR	SHEET NO.	TOTAL SHEETS
6	ARK.			3	9
STATE JOB NO. 62.62					



PLAN

Total Length of Bridge = 307'-0"



ELEVATION
 B.M. Elev. 400.00 (Assumed)
 Nail in root 14" Post Oak
 75' Rt. Sta. 52+75

General Notes:

All concrete to be Class 'A' and shall be placed in the dry.
 In general all construction joints in bents and abutments shall be provided with keys not less than 3' deep covering the middle third of both dimensions. Expansion joints to be provided as shown on the Layout.
 Rock excavation shall be to neat lines of concrete footings. Care shall be exercised to avoid shattering of rock faces by excess blasting.

Reinforcing steel to be deformed bars, of structural or intermediate grade. Shop lists and bending diagrams must be submitted and approved before fabrication is begun.
 For details of End Bents 1 and 5 see Drwg. 5861.
 For details of Intermediate Bents see Drwg. 5862.
 For details of 40' I-Beam Span see Drwg. 2111.
 For details of Modification of 40' I-Beam Span and Remodeling and Redecking 185' Steel Truss Span see Drwg. 5863.

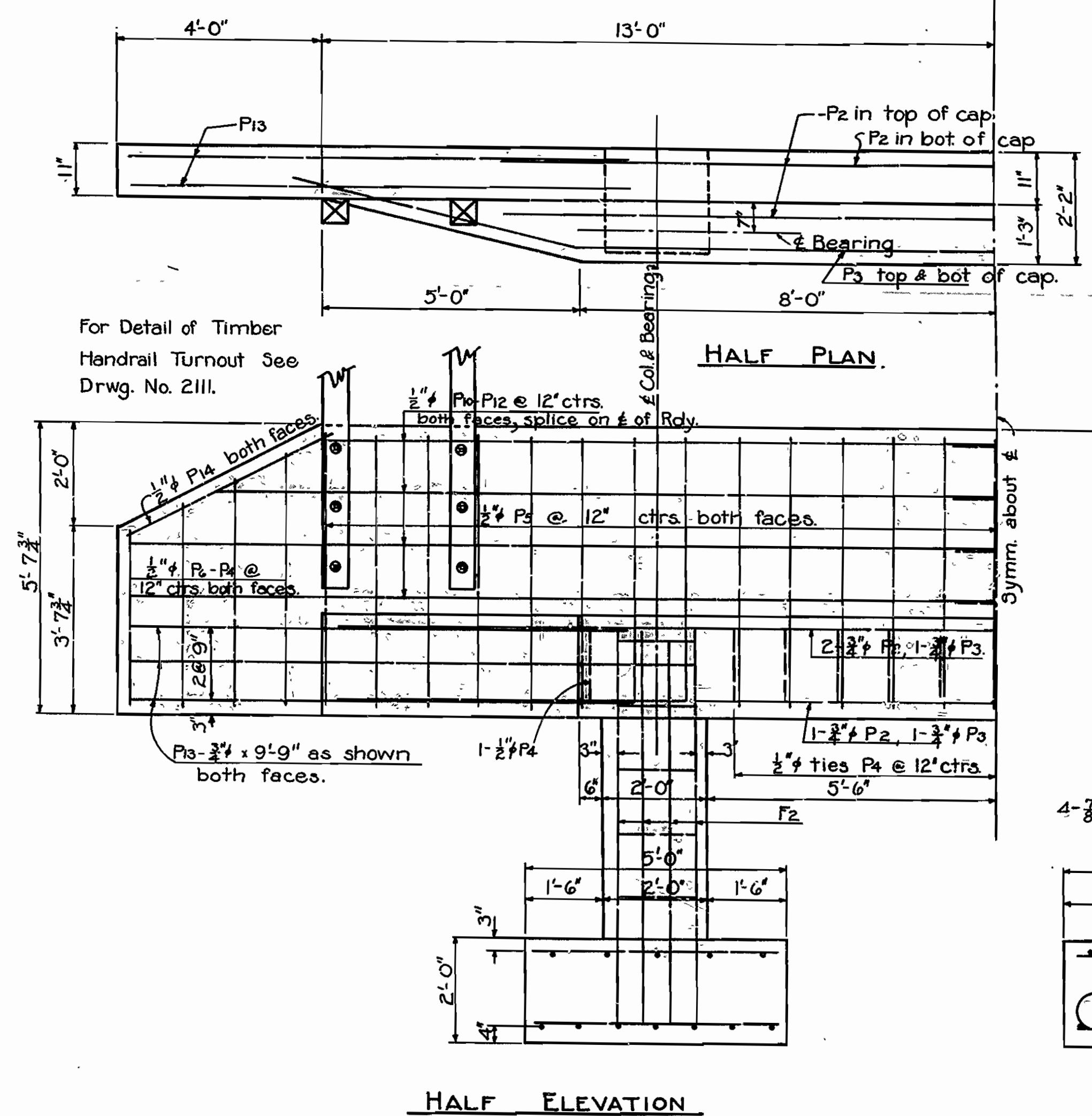
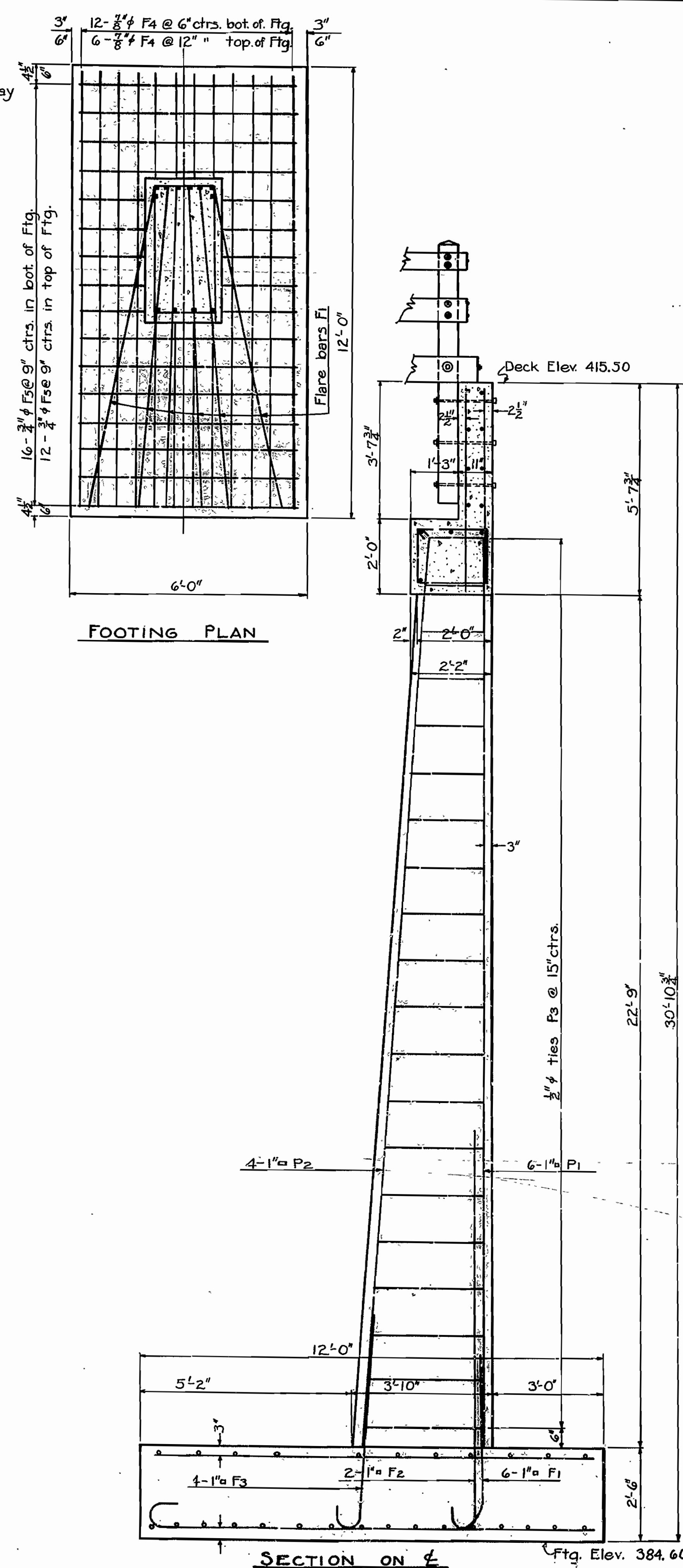
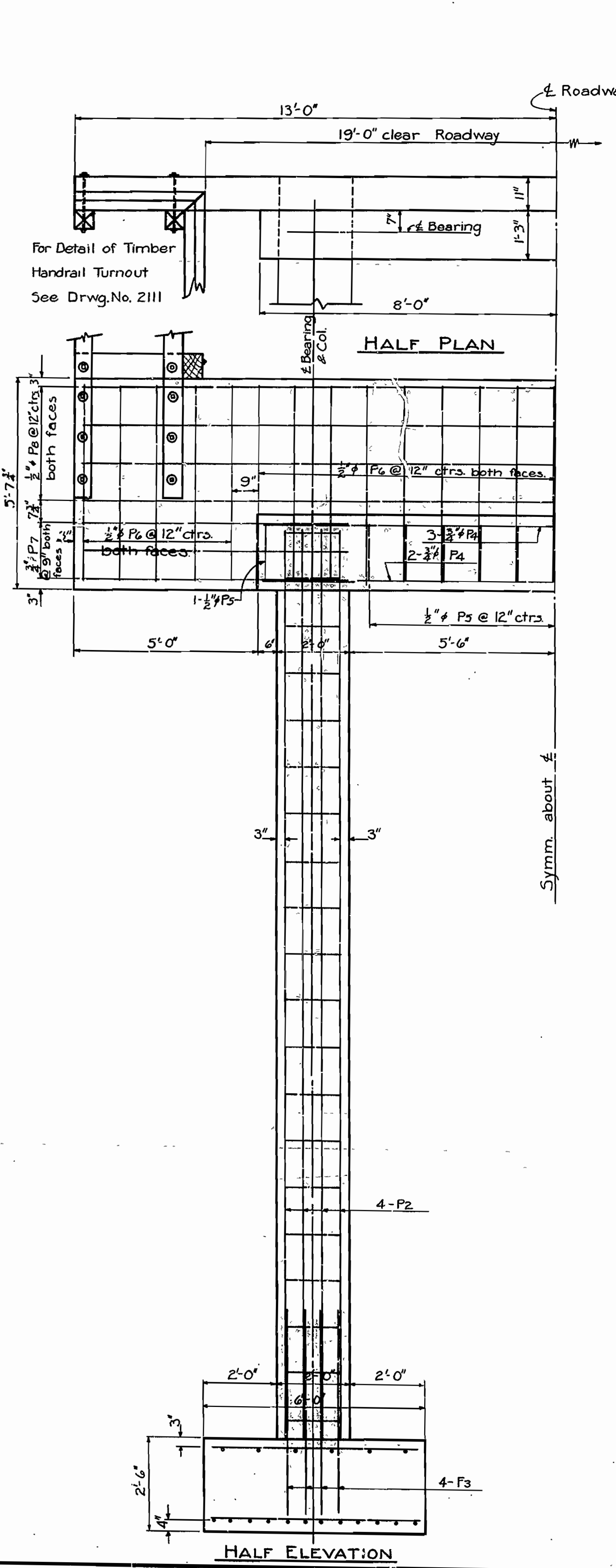
The work under Job 62.62 consists of the construction of the bridge as indicated by Drawings. Earth approaches to be constructed and channel excavation made by state forces after construction of bridge is completed.
 Specifications: Arkansas State Highway Commission Standard Specifications for Road and Bridge Construction adopted June 30th, 1936.

LAYOUT OF
BRIDGE OVER ALUM FORK or SALINE RIVER
SALINE COUNTY

ROUTE 9 SEC. 5
ARKANSAS STATE HIGHWAY COMMISSION
 LITTLE ROCK, ARK.
 Drawn By: E.A.V. Date: 1-5-40
 Traced By: W.A.D. Date: 1-30-40
 Checked By: _____ Date: _____
BRIDGE NO. 2172 DRAWING NO. 5860

N.B. Haas
 PRINCIPAL HIGHWAY ENGINEER (BRIDGE)

FED. ROAD DIST. NO.	STATE	PROJECT NO.	FISCAL YEAR	SHEET NO.	TOTAL SHEETS
6	ARK.			4	9
STATE JOB NO. 6242					



DETAILS END BENT NO. 5

BENT BAR LIST END BENT NO. 1

Mark	Size	Length	Diagram
F1	1"ø	15'-7"	
F2	1"ø	11'-9"	
F3	1"ø	6'-6"	
P3	1/2"	Ave. 8'-11"	
P5	1/2"	7'-7"	

BENT BAR LIST END BENT NO. 5

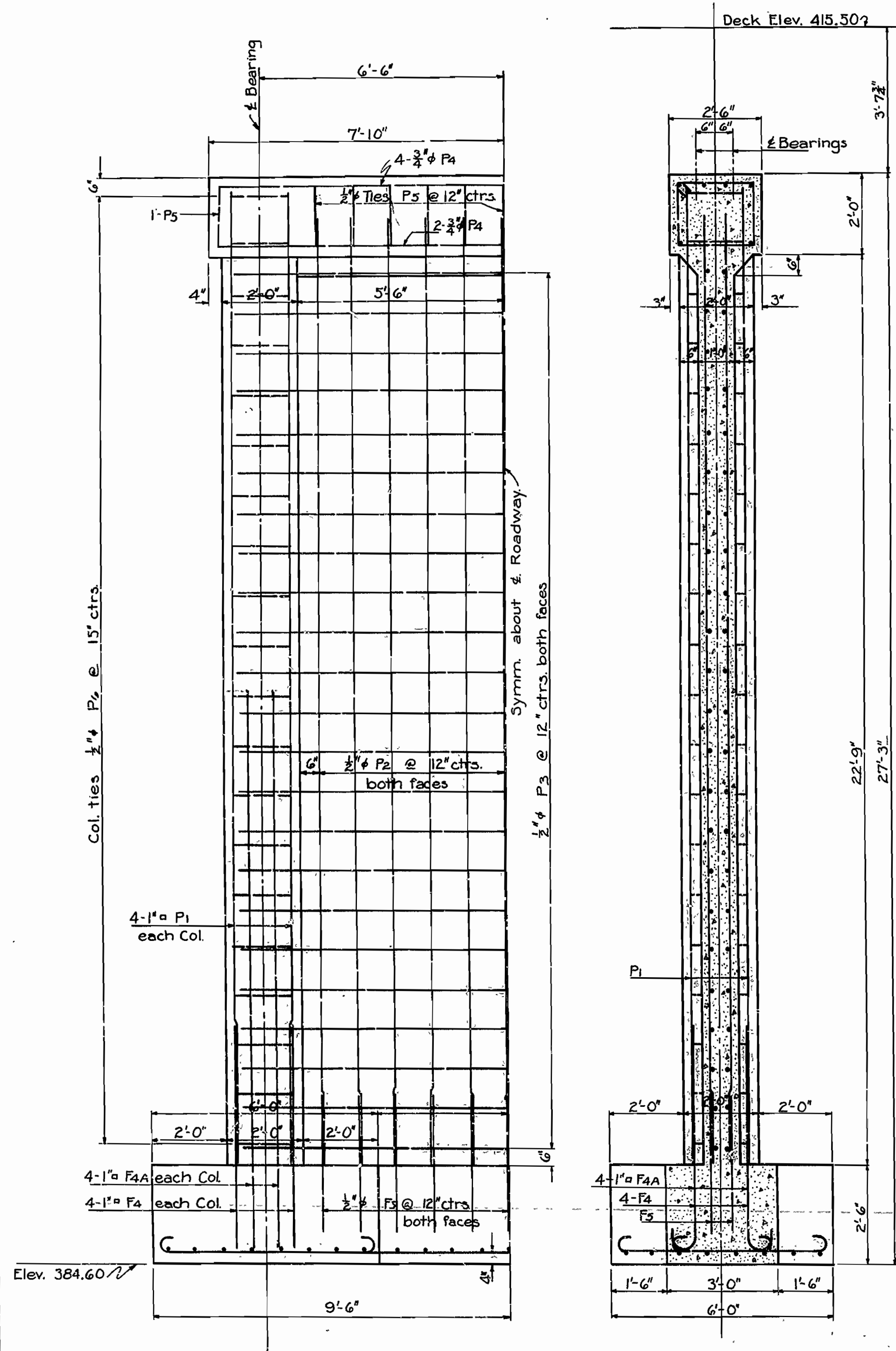
Mark	Size	Length	Diagram
F1	7/8"	12'-3"	
F2	7/8"	8'-8"	
P1	1/2"	7'-3"	
P4	3/4"	7'-7"	
P3	1/2"	27'-0"	

DETAILS OF
 END BENT NO. 1 AND END BENT NO. 5
 BRIDGE OVER ALUM FORK OF SALINE RIVER
 SALINE COUNTY
 ROUTE 9 SEC. 5
ARKANSAS STATE HIGHWAY COMMISSION
 LITTLE ROCK, ARK.
 Drawn By: F.A.V. Date: 1-15-40
 Traced By: W.A.D. Date: 1-29-40
 Checked By: _____ Date: _____
 BRIDGE NO. 2172 DRAWING NO. 5861

Scale: 1/2" = 1 ft.

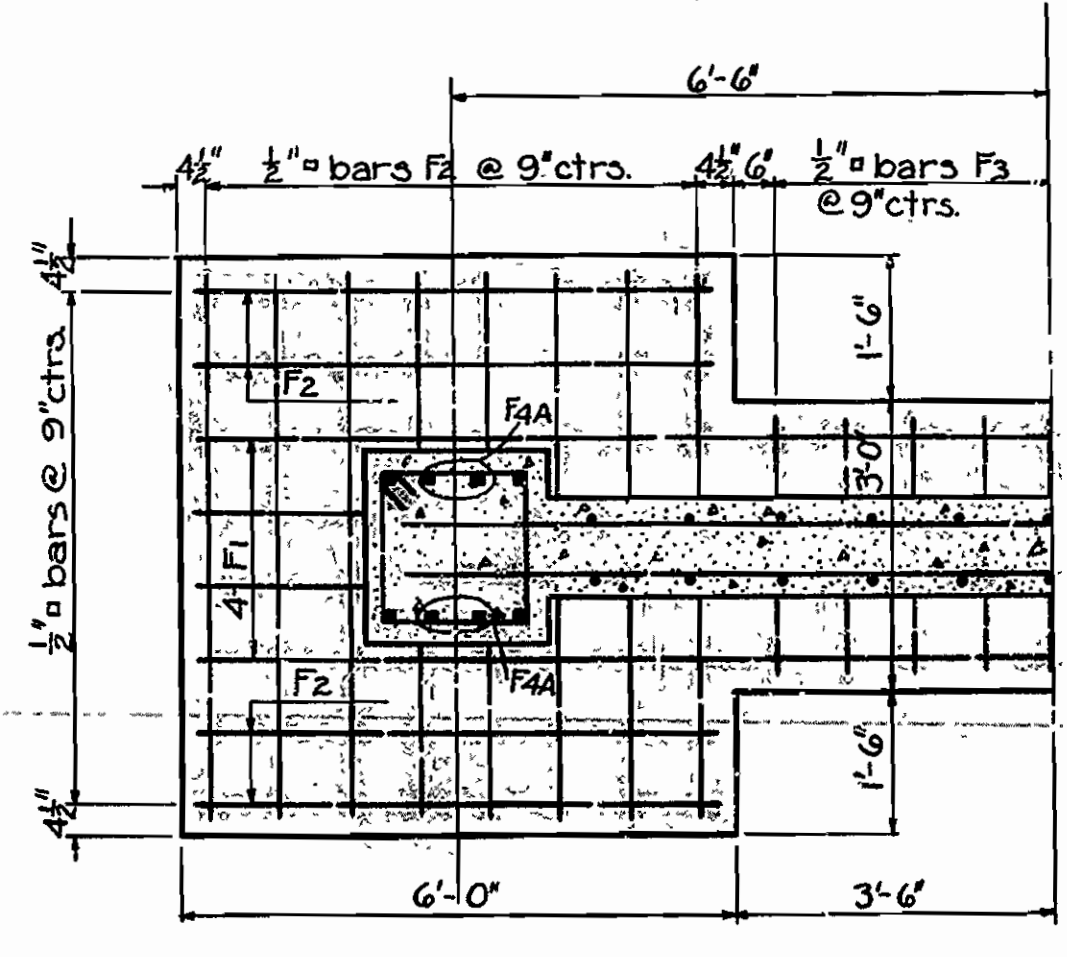
W. C. Sawyer
 PRINCIPAL HIGHWAY ENGINEER (BRIDGE)

FED. ROAD DIST. NO.	STATE	PROJECT NO.	FISCAL YEAR	SHEET NO.	TOTAL SHEETS
6	ARK.			5	9
STATE JOB NO. 6262					

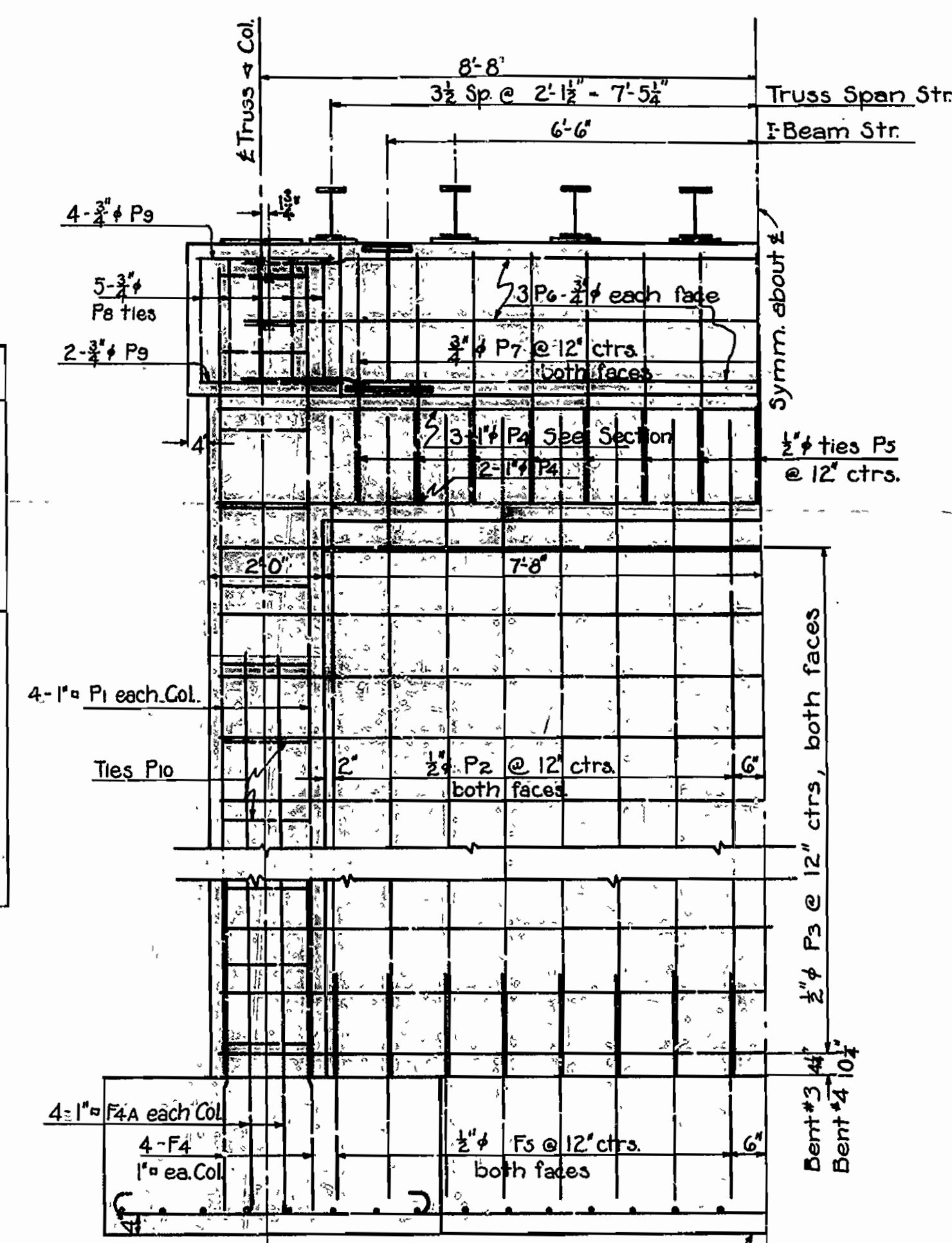


HALF ELEVATION
SECTION ON & RDY.
DETAILS OF BENT NO. 2

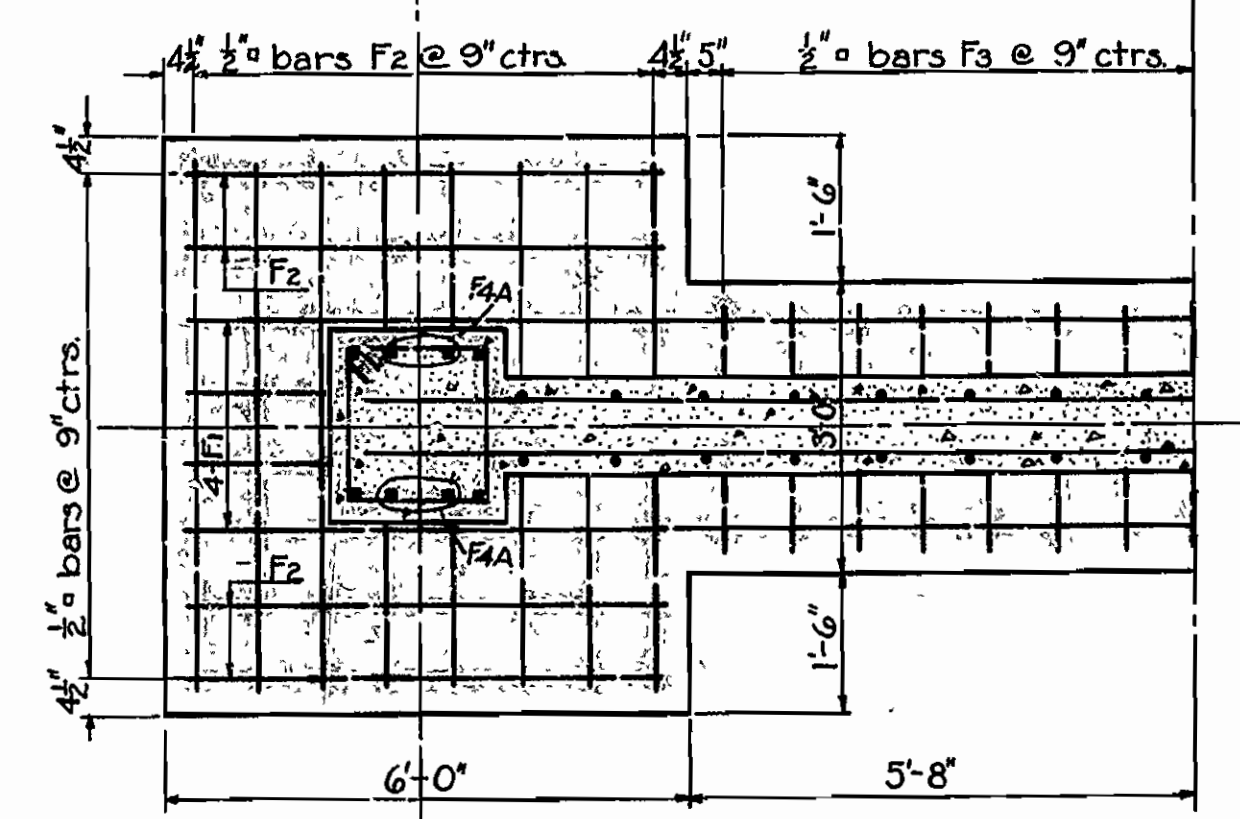
BENT No.	MARK	SIZE	LENGTH	A	B	BENDING DIAGRAM
2	F1	1/2"	19'-6"	18'-6"	4"	Bending diagram for F1
	F2	1/2"	6'-6"	5'-6"	4"	Bending diagram for F2
	F3	1/2"	3'-6"	2'-6"	4"	Bending diagram for F3
	F4	1"	6'-9"	5'-9"	8"	Bending diagram for F4
	P5	1/2"	8'-3"	2'-1/2"	1'-7 1/2"	Bending diagram for P5
	P6	1/2"	7'-3"	1'-7 1/2"	1'-7 1/2"	Bending diagram for P6
3 & 4	F1	1/2"	23'-10"	22'-10"	4"	Bending diagram for F1
	F2	1/2"	6'-6"	5'-6"	4"	Bending diagram for F2
	F3	1/2"	3'-6"	2'-6"	4"	Bending diagram for F3
	F4	1"	6'-9"	5'-9"	8"	Bending diagram for F4
	P5	1/2"	7'-3"	1'-7 1/2"	1'-7 1/2"	Bending diagram for P5
2, 3 & 4	P10	1/2"	7'-3"	1'-7 1/2"	1'-7 1/2"	Bending diagram for P10
	F4A	1"	15'-0"	14'-0"	8"	Bending diagram for F4A



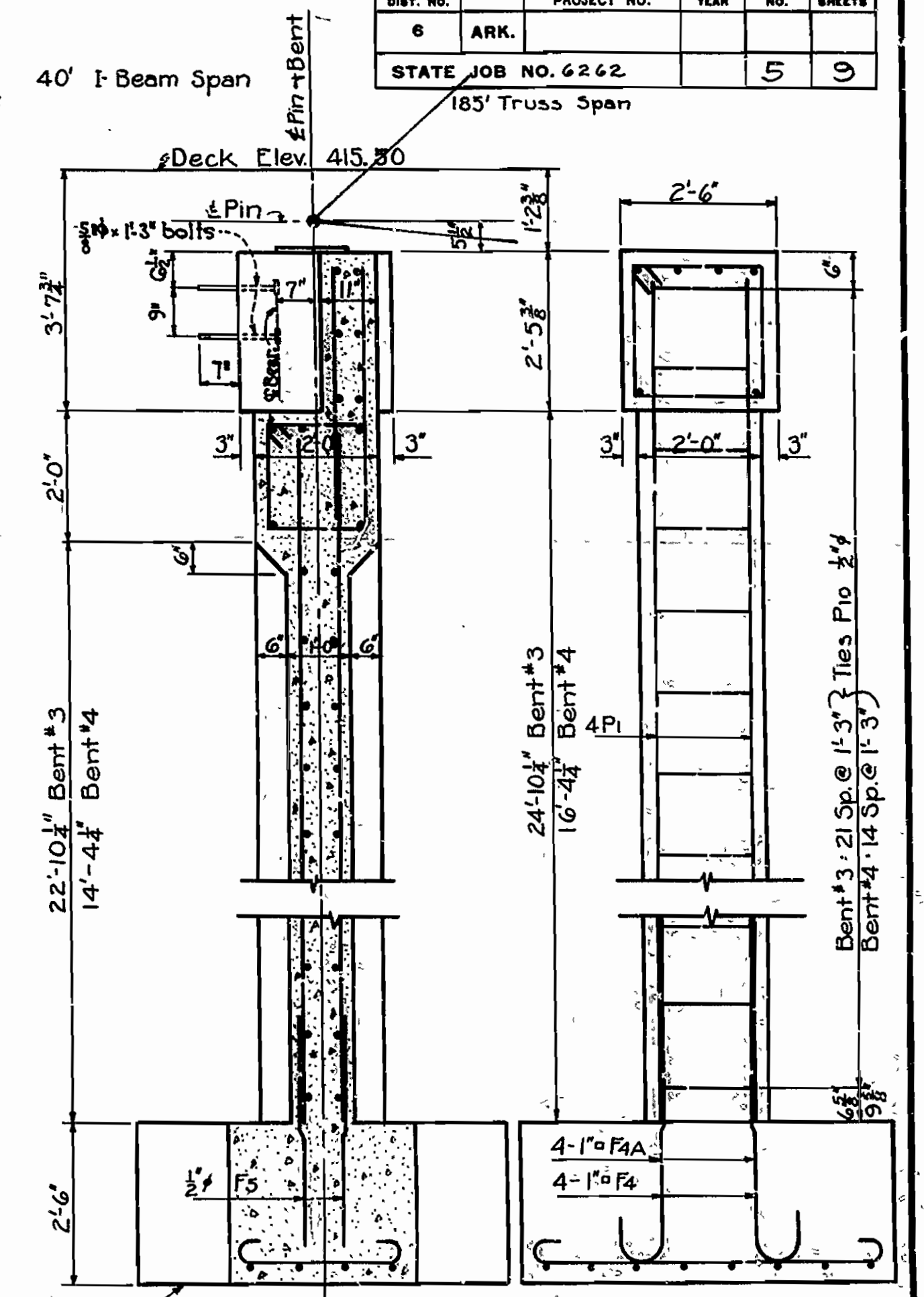
HALF FOOTING PLAN



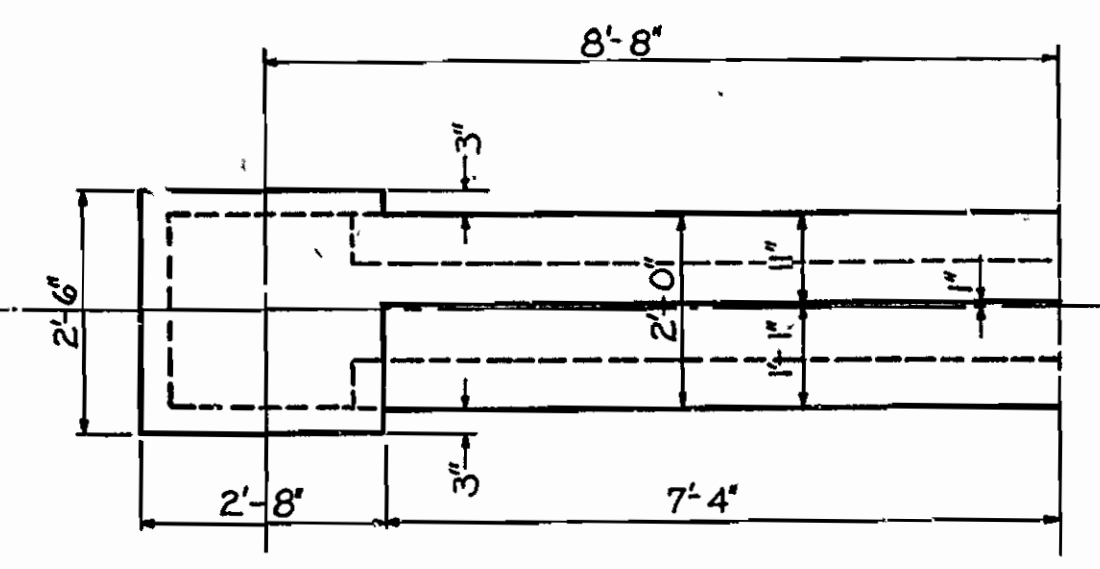
HALF ELEVATION



HALF FOOTING PLAN



SECTION ON & RDY. END ELEVATION



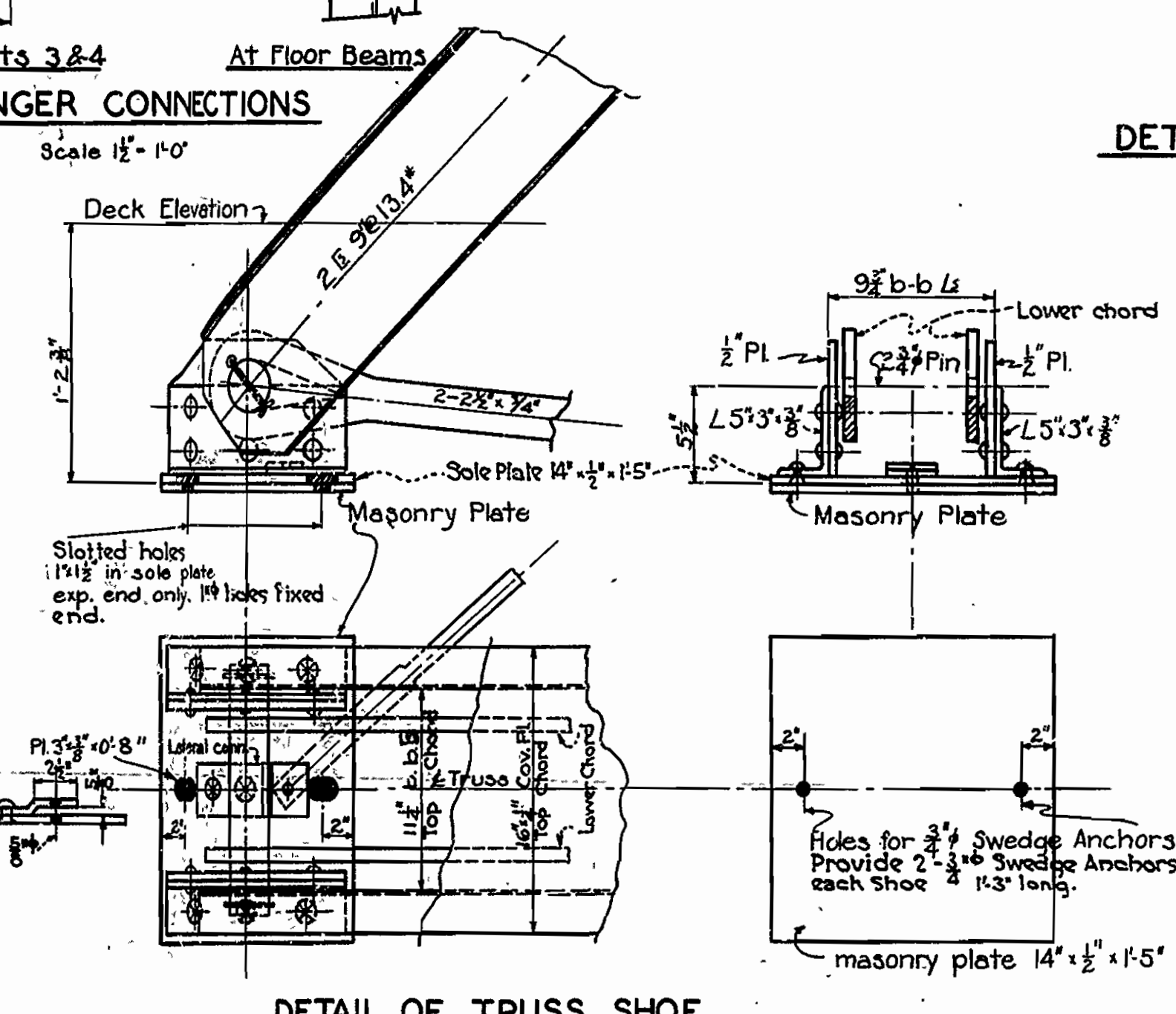
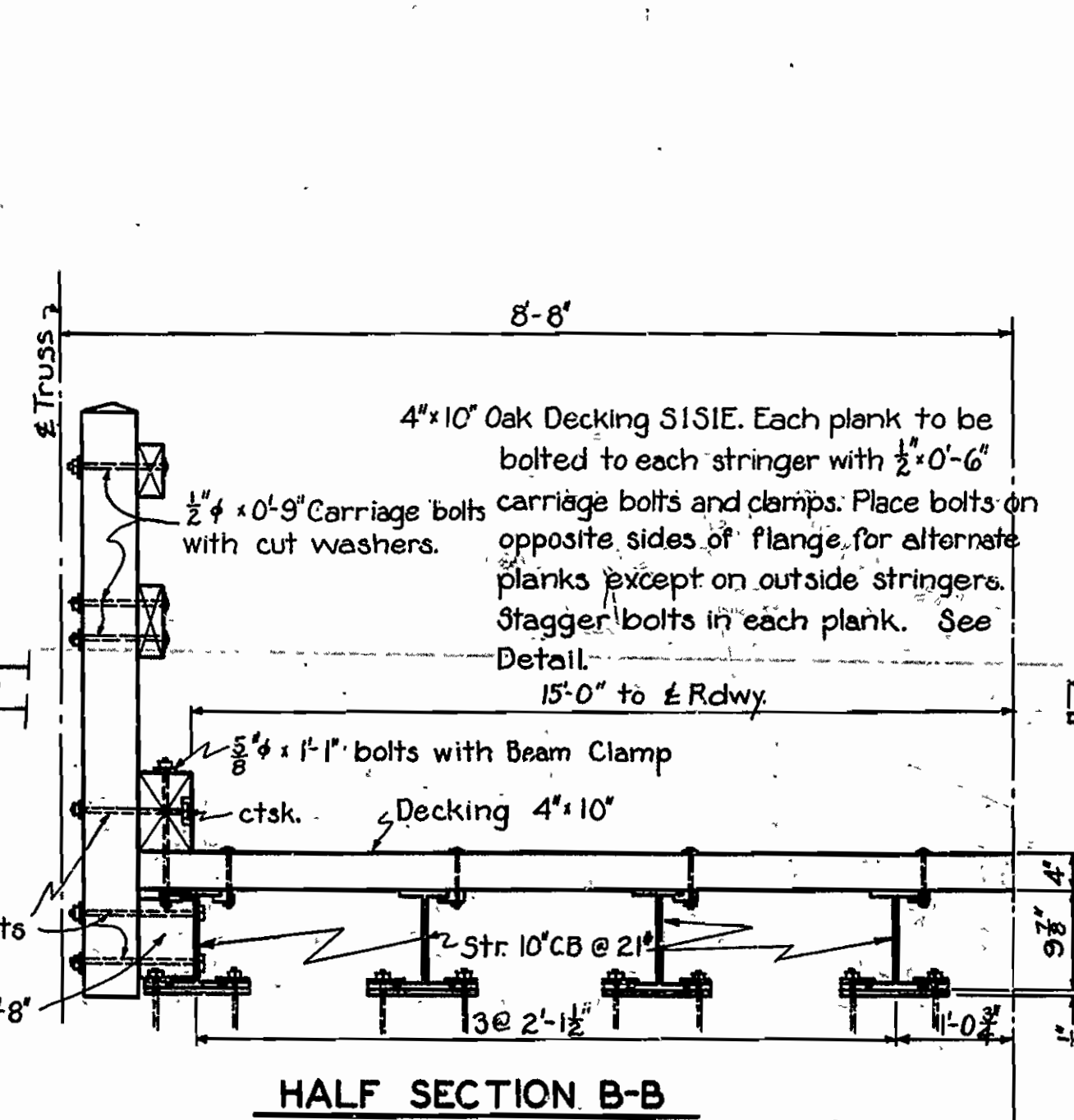
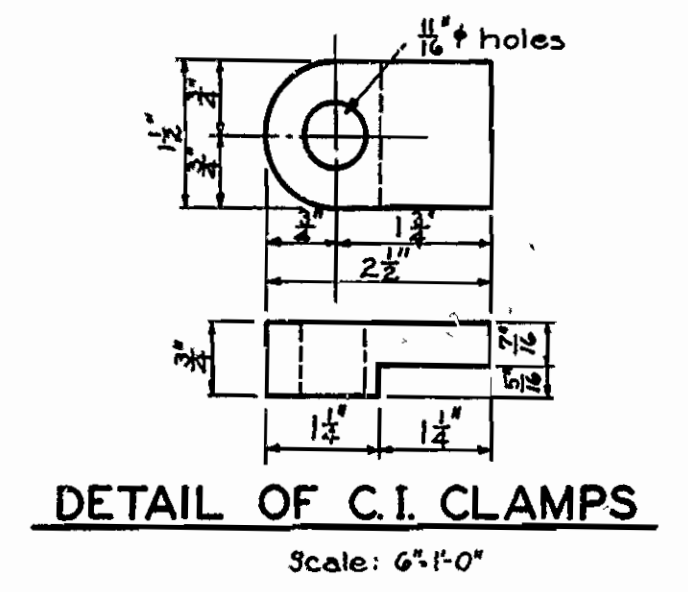
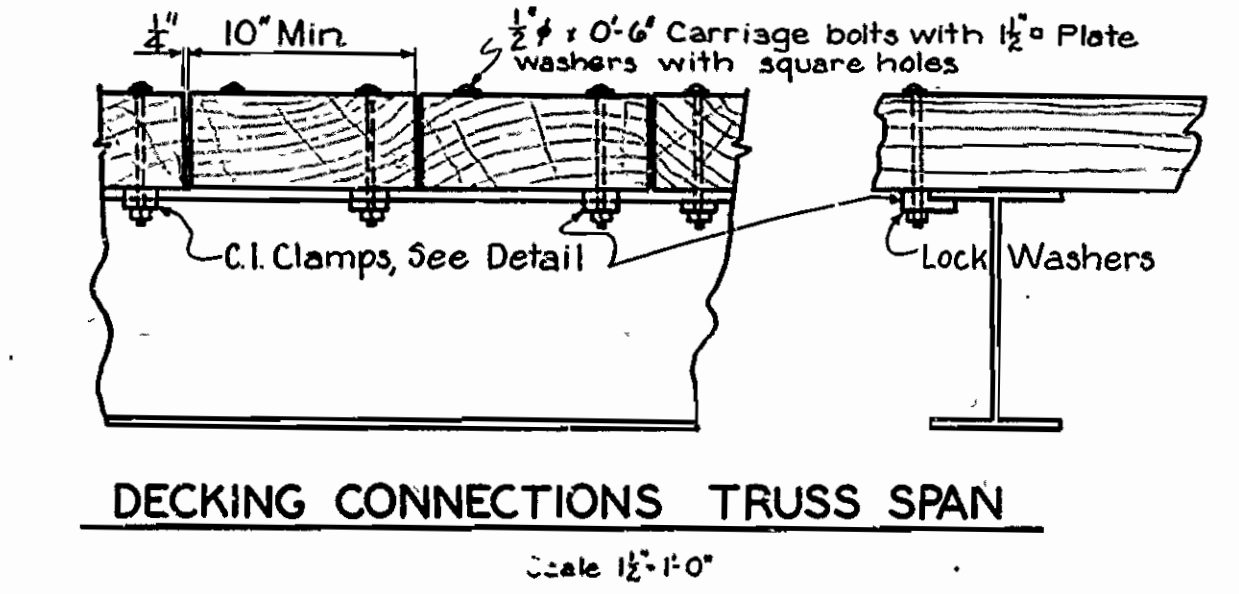
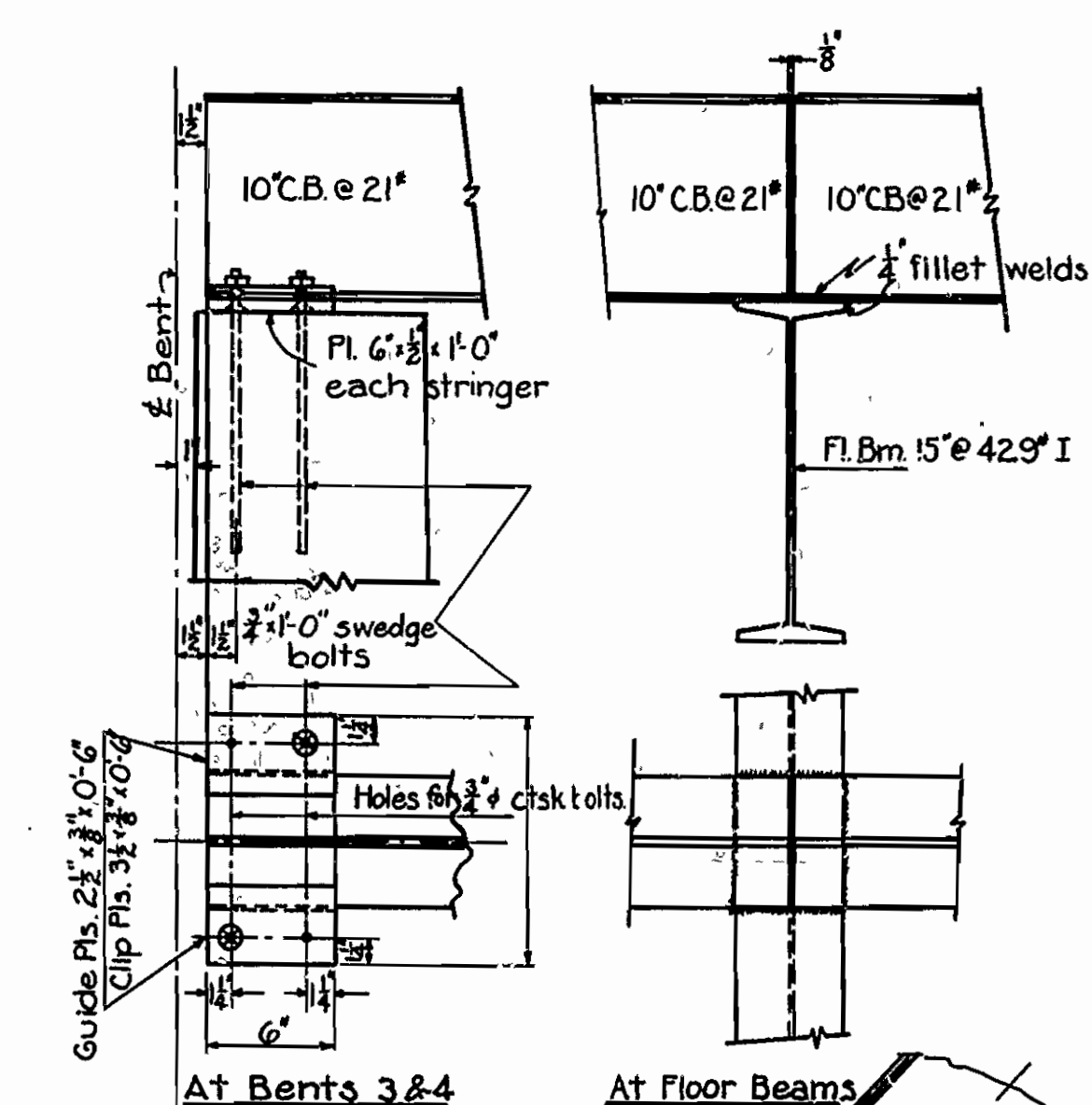
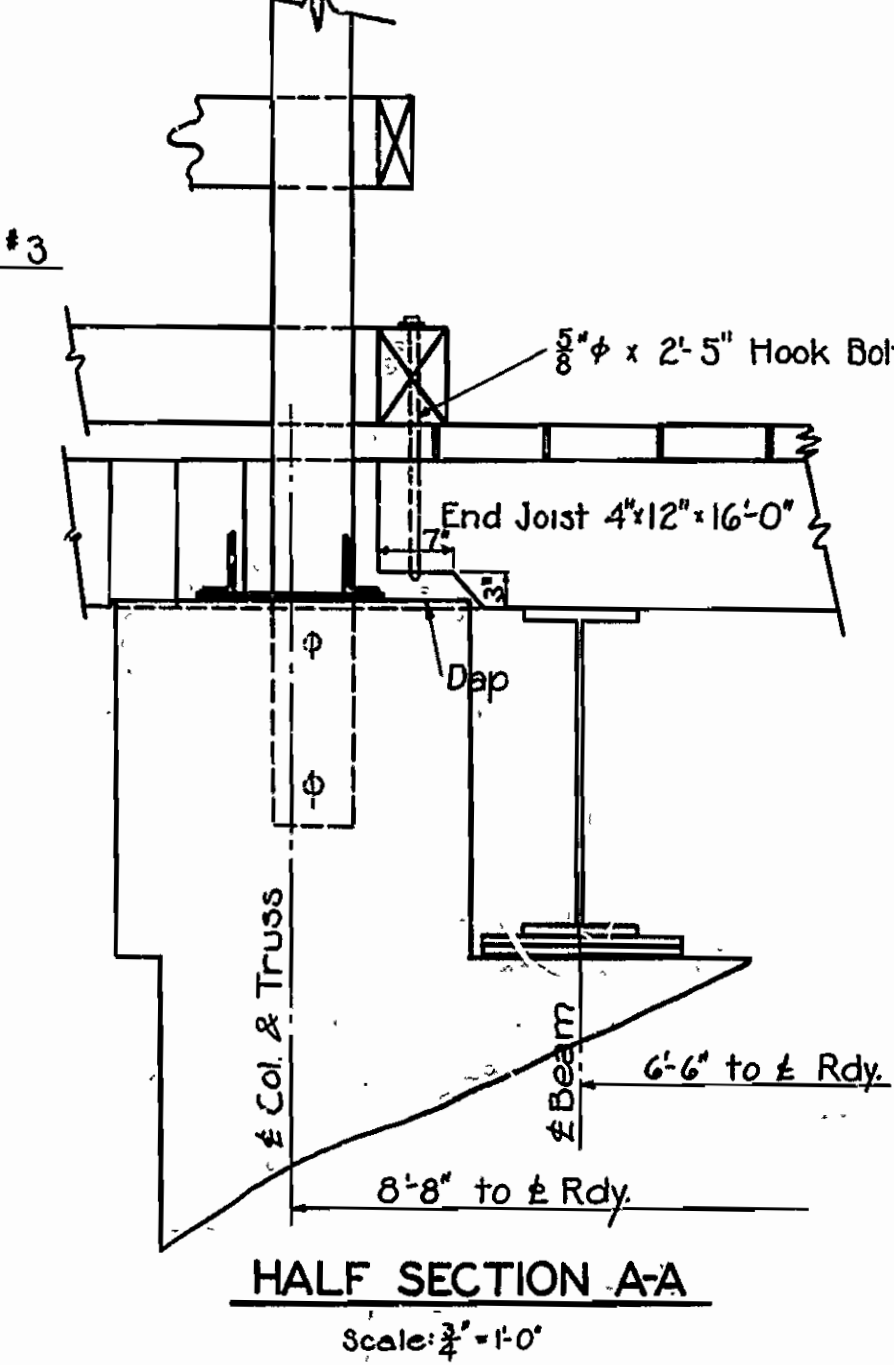
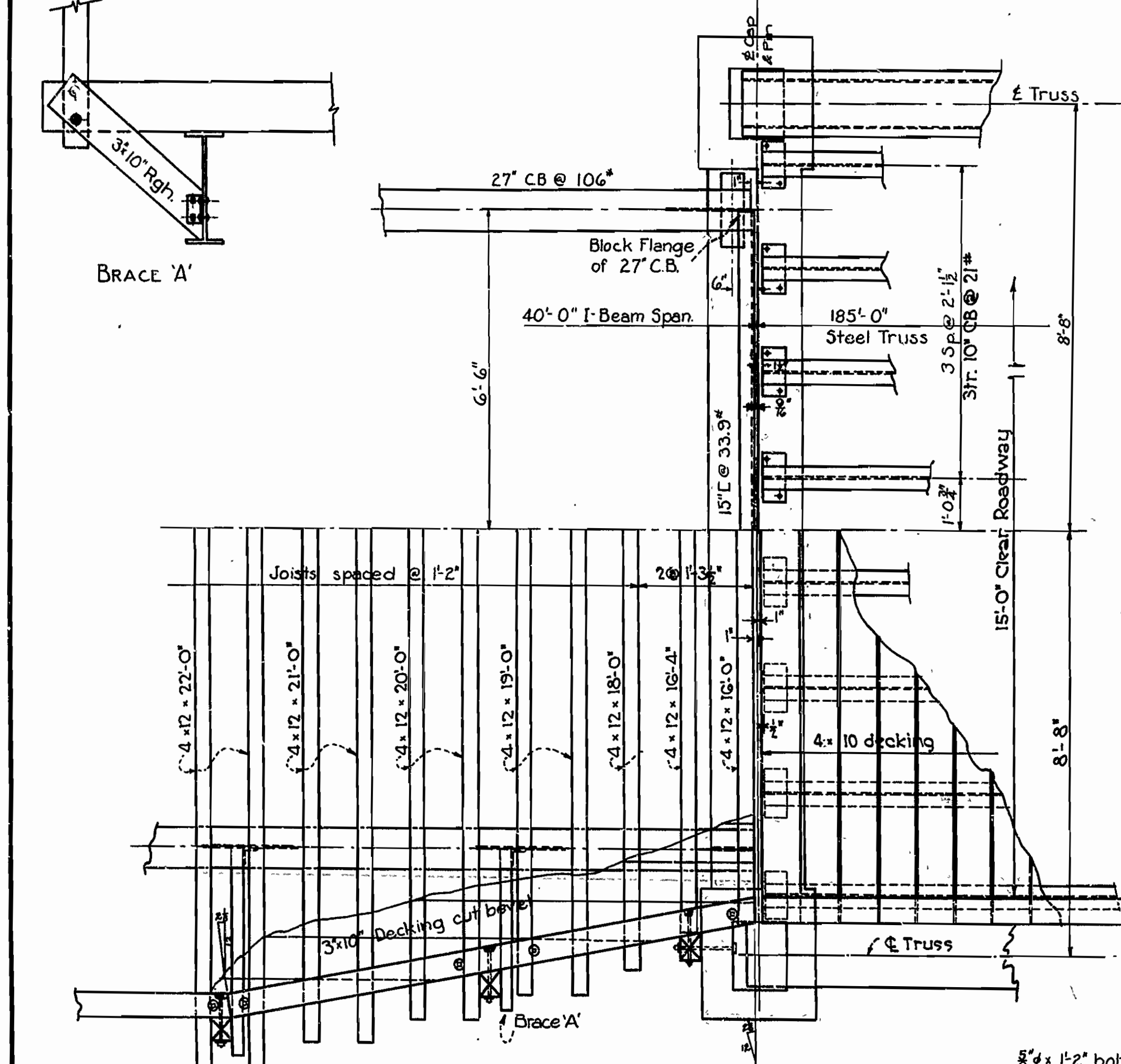
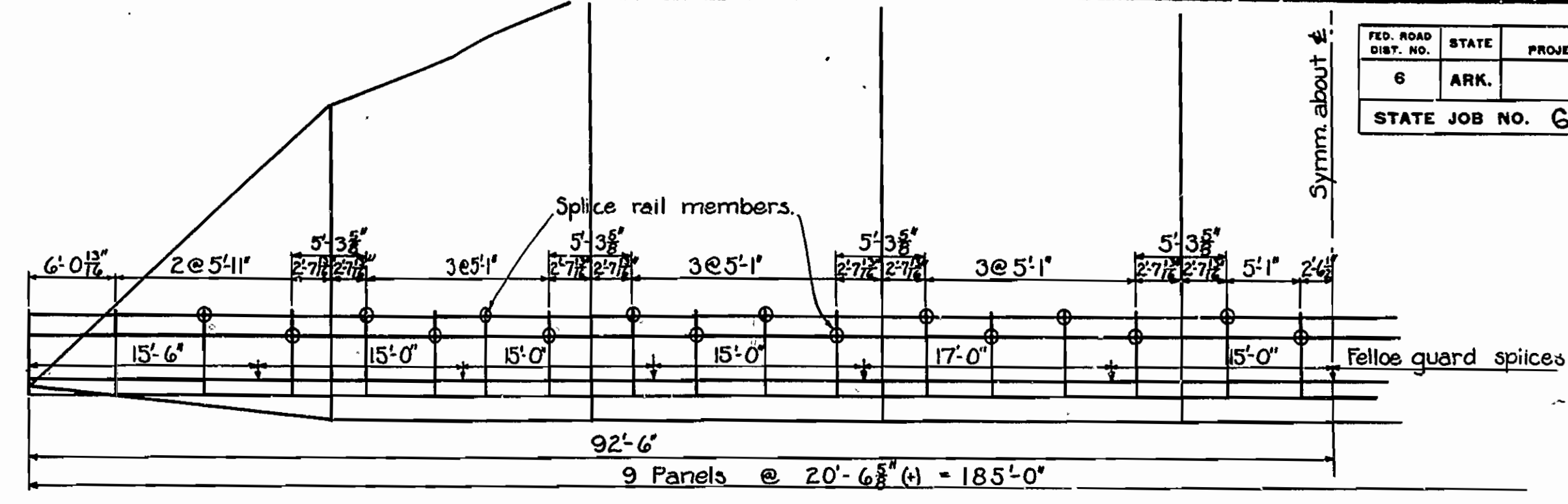
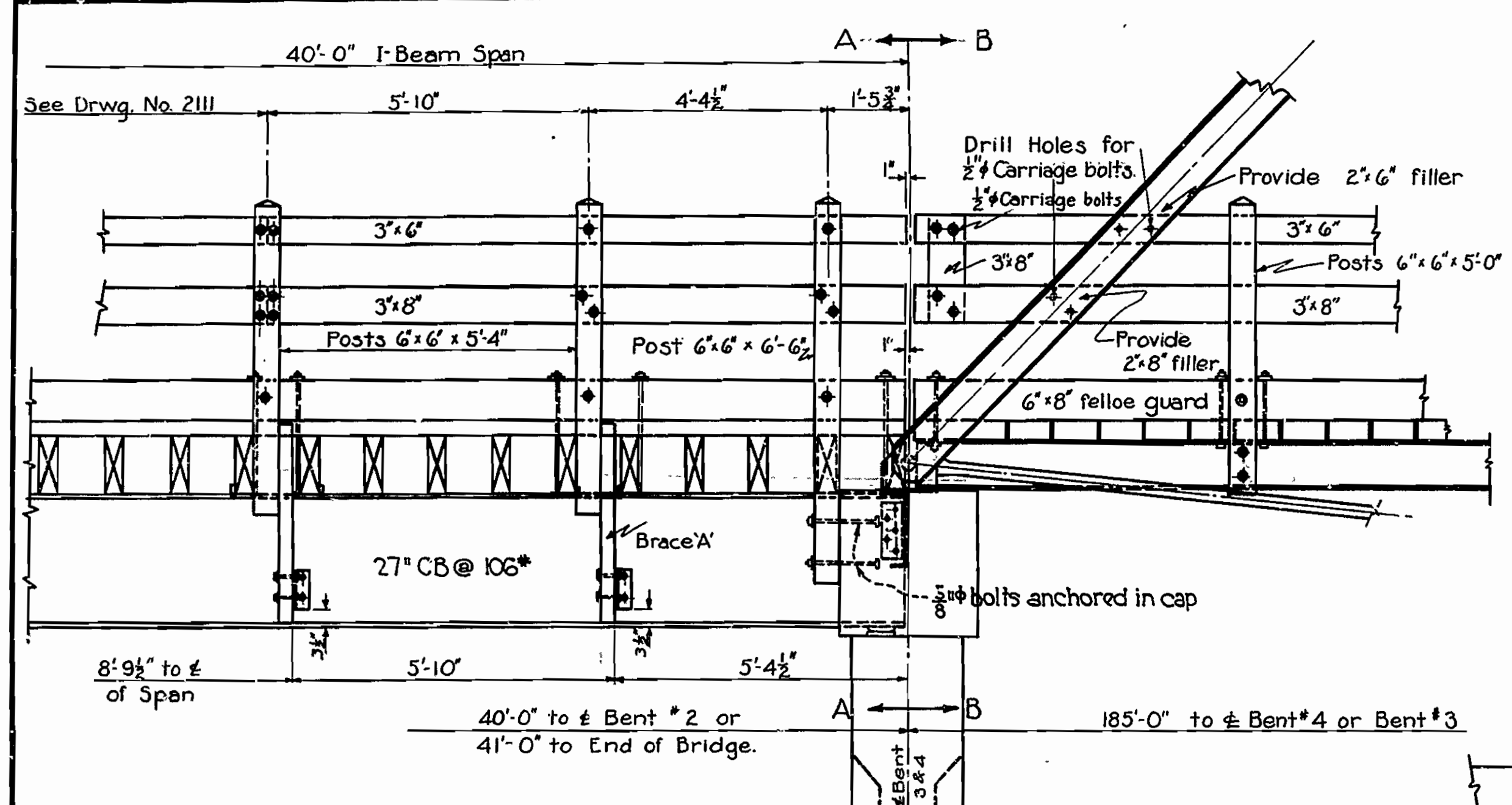
HALF PLAN OF CAP

DETAILS OF BENTS 3 AND 4

DETAILS OF BENTS NO. 2, 3, & 4.
BRIDGE OVER ALUM FORK OF SALINE RIVER
SALINE COUNTY
ROUTE 9 SEC. 5
ARKANSAS STATE HIGHWAY COMMISSION
LITTLE ROCK, ARK.
Drawn By: E.A.W. Date: 1-17-40
Traced By: W.A.D. Date: 1-31-40
Checked By: _____ Date: _____
Scale: 1/2" = 1 ft.
BRIDGE NO. 2172 DRAWING NO. 5862

W.A.D.
PRINCIPAL HIGHWAY ENGINEER (BRIDGE)

FED. ROAD DIST. NO.	STATE	PROJECT NO.	FISCAL YEAR	SHEET NO.	TOTAL SHEETS
6	ARK.			6	9
STATE JOB NO. 6262					



NOTE: All dimensions relating to Truss Span are to be checked in the field before fabrication of new material is started.

DETAILS OF NEW DECK ON 185'-0" TRUSS AND MODIFICATION OF I-BM. APPR. SPAN BRIDGE OVER ALUM. FORK OF SALINE RIVER SALINE COUNTY ROUTE 9 SEC. 5

ARKANSAS STATE HIGHWAY COMMISSION LITTLE ROCK, ARK.

Drawn By: E.A.W. Date: 1-10-40
Traced By: W.A.D. Date: 2-3-40
Checked By: _____ Date: _____

Scale: 1" = 10' As shown

BRIDGE NO. 2172 DRAWING NO. 5863

M.B. Lewis
PRINCIPAL HIGHWAY ENGINEER (BRIDGE)

